

Academy of Pediatric Physical Therapy



Academic & Clinical Educators (ACE) SIG Newsletter Fall 2018

MESSAGE FROM THE CHAIR

JENIFER FURZE

I hope everyone enjoyed a great summer and fall full of family fun and vacations. The ACE SIG continues to strive to meet the needs of it's members and to that end we have collaborated with experienced faculty to support the Pediatric Faculty Institute preconference workshop at APPTAC 2018. In addition, the SIG is working to create a Clinical Educator Toolkit similar to the Faculty Toolkit to provide clinical educators with additional resources to optimally educate students.

A survey will be forthcoming via the listserv and facebook to identify mid-career

faculty needs so the SIG can begin to develop resources in this area.

The SIG continues to thrive due to the strength and willingness of members to volunteer time and expertise in advancing the initiatives of the ACE SIG and the APPT mission so "thank you" to those of you who have served in this capacity and if you have an interest we have a need.

Lastly, I will be transitioning out of the role of ACE SIG chair following CSM 2019 and Debbie Anderson will be the incoming chair. Thank you for the opportunity to serve in this capacity for the last 8 years, it has

been a pleasure working with many of you to get this SIG "off the ground" and supporting the needs of our members.



In This Newsletter

Programming Updates, Call for Proposals, ACE SIG Restructuring, Current Initiatives, Leadership and Upcoming Events.

Programming Updates

APPTAC 2018 – Chattanooga, TN

We are looking forward to seeing members in Chattanooga, TN this fall!

There are great opportunities for programming and networking available at the conference. For more information on APPTAC, November 9 – 11, 2018, and to register, go to <https://pediatricapta.org/events/annual-conference/2018/index.cfm>

Each year, ACE SIG leadership assists in selection of the programming for APPTAC. Look for these Concurrent Sessions specifically sponsored by the ACE SIG while attending:

Friday, Nov 9 @ 10:45 am

Blended Pediatric Physical Therapist Education: Designing Innovative Online and Immersive Face-to-face Teaching and Learning Experience

Kendra Gagnon, PT, PhD & Tricia Catalino, PT, DSc, PCS

Saturday, Nov 10 @ 2:15 pm

There's No "I" in Team: Pediatric Clinical and Academic Partnerships Working Together for the Win

Marisa Birkmeier, PT, DPT, PCS, c/NDT & Staci Kovelman, PT, DPT & Mandana Fisher, PT, DPT, PCS

Saturday, Nov 10 @ 4:00 pm

An Acute Care Pediatric Simulation Interprofessional Experience for Entry Level Physical Therapy Students

Roberta R. Gatlin, PT, DScPT, PCS

Saturday, Nov 10 @ 4:00 pm

Guiding Students on the Road Less Traveled: Using Retrospective Case Reports to Connect Academia, Clinical Experiences, and Novel Concepts
Roberta OShea, PT, DPT, PhD, Mary Jones, PT, DHS, CLT, NCS & Amanda Anderson, SPT

Sunday, Nov 11 @ 8:30 am

Summative Outcome Measures: Tools in Assessing Psychomotor and Other Skills in Student Learning

Jennifer A. Furze, PT, DPT, Mary Jane K. Rapport, PT, DPT, PhD, FAPTA, Lisa Dannemiller, PT, DSc, PCS.

Sunday, Nov 11 @ 10:15 am

Working Together: A Joint Initiative Between Academic and Clinical Partnerships to Enhance Student Learning and Clinical Satisfaction

Kara Boynewicz, PT, DPT, PCS, ATC, Kelly Rary, PT & Karen Speropulos, PT, PCS

Sunday, Nov 11 @ 1:45 am

Implementation of the Essential Core Competencies into Entry-level Pediatric Physical Therapy Education

Priscilla Weaver, PT, PhD, DPT, PCS, Tricia Catalino, PT, DSc, PCS, Kathy Martin, PT, DHSc & Robin L. Dole, PT, DPT, EdD

ACE SIG leadership and members are also assisting in preparation of the **Team-Based Learning** Session at APPTAC this year that is led by the TBL Committee and Peg Mohr as Chair. This year's session is focused on *Clinical Decision-Making Across the Lifespan*. The case study will address neonatal abstinence syndrome, the influence of adverse childhood events, and pediatric concussion management from birth – 19 years of age.

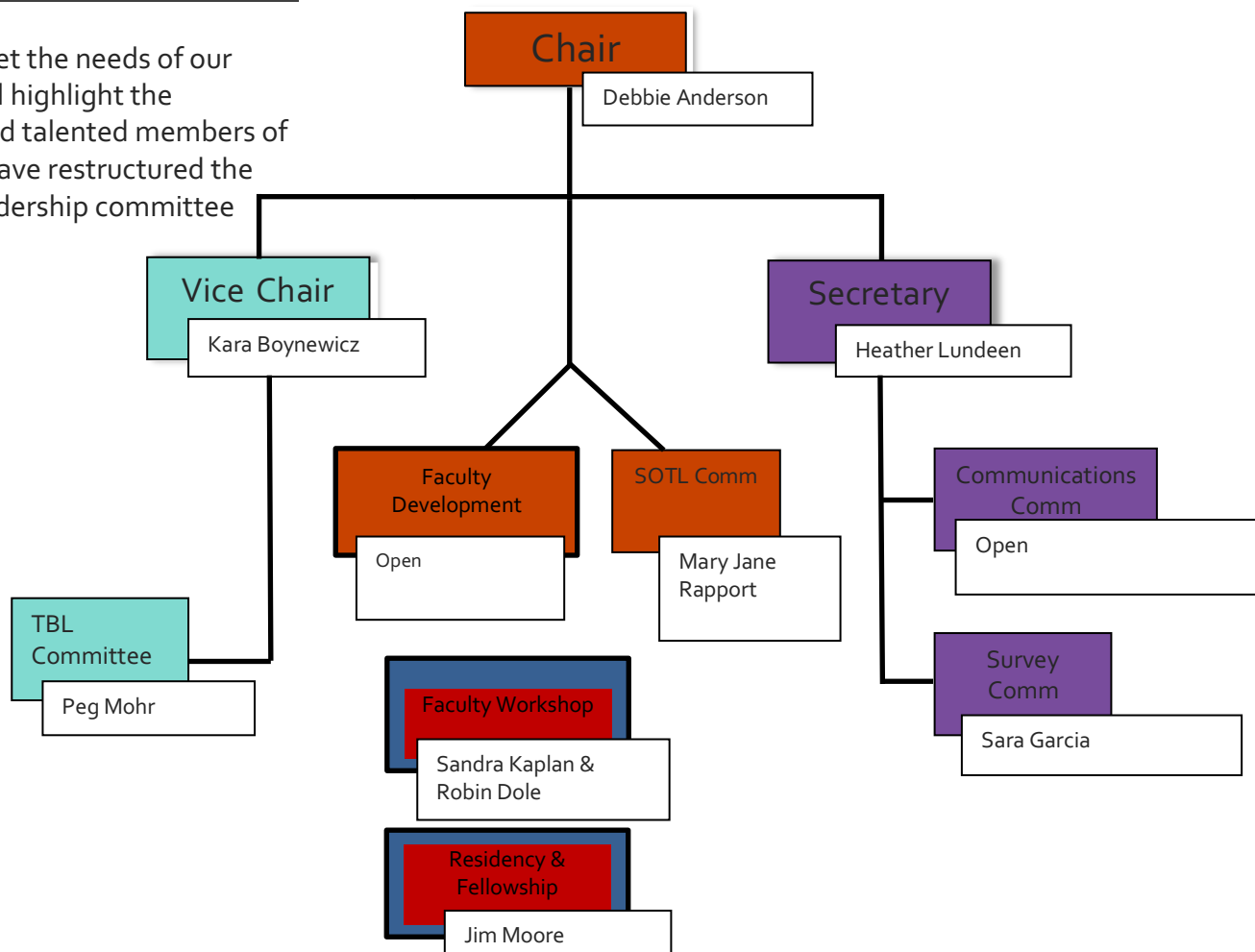
ACADEMY OF
PEDIATRIC
—PHYSICAL THERAPY
ANNUAL CONFERENCE

Believe it or not the **CALL FOR PROPOSALS** for APPTAC 2019 is now open

<https://www.abstractscorecard.com/cfp/submit/login.asp?EventKey=VNQFHRVW> and session proposals are due December 1, 2018.

UPCOMING LEADERSHIP CHANGES OF ACE SIG AS OF 2/1/2019

To better meet the needs of our members and highlight the innovative and talented members of the SIG, we have restructured the executive leadership committee



SIG Leadership (2/19)

- Chair, Debbie Anderson, PT, EdD, PCS; dander@midwestern.edu; Illinois
- Vice Chair, Kara Boynewicz, PT, DPT, PCS; boynewicz@etsu.edu; Tennessee
- Secretary, Heather Lundeen, PT, DPT, PCS; heatherlundeen@umary.edu; North Dakota
- TBL Committee Chair, Peg Mohr, PT, PhD; North Dakota
- Faculty Development Chair, open
- SOTL Committee Chair, Mary Jane Rapport, PT, DPT, PhD, Colorado
- Communication Committee Chair, Open
- Survey Committee, Sara Garcia
- Executive Committee liaison to the ACE SIG: Lori Glumac

Current Initiatives

SIG MEMBERS

Clinical Educator Toolkit

A Clinical Educator Toolkit taskforce has been formed and has been working diligently to develop resources for clinical educators to include both a “static” fundamental resource and then a more dynamic resource that others can add to. Look for the static resource to be available Fall 2019. Marisa Birkmeier is the taskforce chair so if you have any questions, feel free to reach out to her.



APPT Strategic Plan

The most recent version of the Academy strategic plan can be found at:
http://www.pediatricapta.org/userfiles/files/APPTStratPlanGoalsObjStrat2018_2020.pdf

The ACE SIG has numerous roles in this plan, specifically related to Goal 1: Enhance educational pathways to practice in pediatric physical therapy. To that end, we have been reaching out to the Education Leadership Partnership and the Academy of Physical Therapy Education to collaborate on common goals. The Scholarship of Education SIG within the APPTe embraces educational research and has numerous resources to facilitate learning in this area.

In addition, we have worked with the Research Committee to revise the APPT research agenda so that educational research is now a recognized component of the research plan. This will allow educational researchers to apply for and be eligible for APPT research grants.

Mid Career Faculty Resources

Look out for a Mid Career Faculty Survey coming to facebook and the ACE SIG listserv during the month of November. If you are an academic faculty member with 5- 15 years of experience in teaching, the SIG wants to hear from you about your needs.

- **ACE Listserv** is available to promote discussion between members. All APPT Members are welcome to join the ACE Listserv by signing up on the Academy website under “Resources”.

- **ACE Facebook Group** is available to pediatric physical therapists interested in discussing topics of common interest through the Facebook platform. You can request to join the ACE SIG Facebook Group by searching “APTA Academy of Pediatric Physical Therapy ACE SIG” in the main Facebook search bar.
- **APTA Online Community**

Upcoming Events

Combined Sections Meeting of the APTA – January 23-26, 2019

<http://www.apta.org/CSM/Overview/>

- **The next ACE SIG Business Meeting will be held at CSM 2019 – Date/time TBD**

Academic
& Clinical
Educators
(ACE) SIG
Newsletter
Fall 2018