

Academy of Pediatric Physical Therapy



Academic & Clinical Educators (ACE) SIG Newsletter December 2017

MESSAGE FROM THE CHAIR

JENIFER FURZE

As we approach the Holiday Season and I return from the APPT Strategic Planning (SP) meeting and APPTAC, I wanted to provide everyone with some important updates and opportunities that transpired from a very successful and transformative Strategic Planning meeting for the Academy of Pediatric PT in general. As a result of this meeting, the following DRAFT vision, mission, and goals were developed by the 32 member leadership team present:

Vision: Optimize movement for lifelong meaningful participation of all children.

Mission: Advance pediatric physical therapy through excellence in education, advocacy, and research.

Goals:

- 1) Enhance educational pathways to practice in pediatric physical therapy.
- 2) APPT will be a relevant, innovative, agile and responsible organization.

3) Advocate for meaningful participation of all children.

4) Elevate pediatric physical therapist practice through the application of evidence.

Our SIG was identified as a major contributor in meeting the SP goal of "enhancing educational pathways to practice in pediatric physical therapy.

We will need your help to achieve such a bold mission, vision, and resulting goals. As I have stated previously, the SIG is only as strong as its' engaged

membership. A HUGE thank you to those that have served and a “welcome” to those that are willing to come forward to help us achieve these critical goals.



In This Newsletter

Vision, Mission, and Goals of new strategic plan, Upcoming Initiatives, Opportunities to serve.

Opportunities & Workgroups to achieve SP goals:

- 1) Submit a short nomination to be considered for Clinical Instructor toolkit workgroup- this group will develop a new Clinical Instructor toolkit. Survey link: <https://www.surveymonkey.com/r/BHVCH5L>
- 2) Identify individuals interested in addressing the variability in pediatric PT education through scholarship
- 3) Educational research – the APPT research committee welcomes proposals for educational research. Deadline for application is April 1 and Sept 1 of every year (<https://pediatricapta.org/members/research/index.cfm?>)

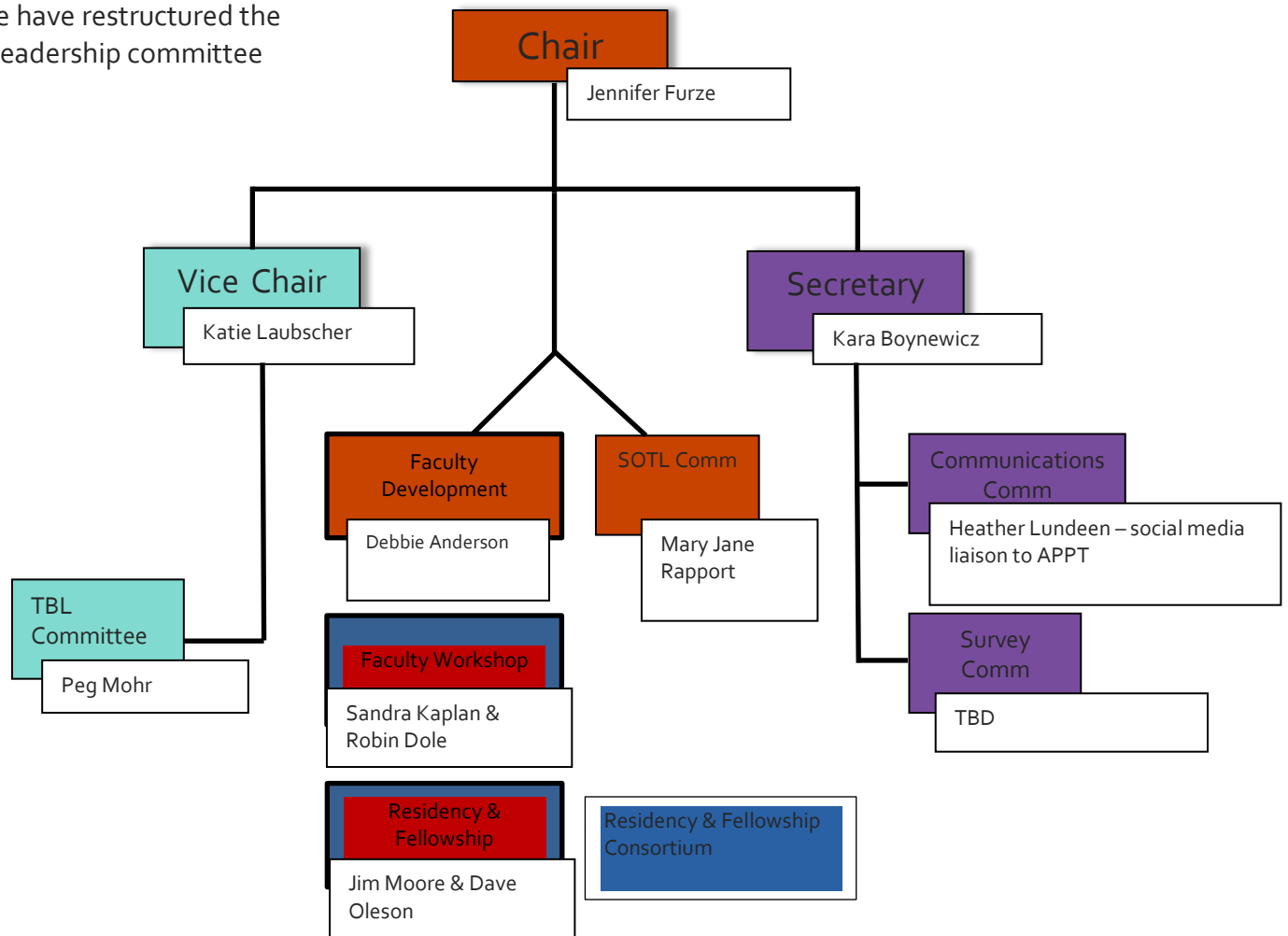
NEEDS

If you are a clinical instructor or a CCCE or DCE – we NEED your input and talent to develop a Clinical Instructor Toolkit. Please complete the survey:

<https://www.surveymonkey.com/r/BHVCH5L>

CURRENT RESTRUCTURING OF ACE SIG

To better meet the needs of our members and highlight the innovative and talented members of the SIG, we have restructured the executive leadership committee



SIG Leadership

- Chair, Jennifer Furze, PT, DPT, PCS; jfurze@creighton.edu; Nebraska
- Vice Chair, Katie Laubscher, PT, DPT, PCS; katiemlaubscher@gmail.com; Iowa
- Secretary, Kara Boynewicz, PT, DPT, PCS; boynewicz@etsu.edu; Tennessee
- TBL Committee Chair, Peg Mohr, PT, PhD; North Dakota
- Faculty Development Chair, Debbie Anderson, PT, EdD, PCS Illinois
- SOTL Committee Chair, Mary Jane Rapport, PT, DPT, PhD, Colorado
- Communication Committee Chair, Heather Lundeen, PT, DPT, PCS, North Dakota
- Executive Committee liaison to the ACE SIG: Lori Glumac

Current Initiatives- RESOURCES

Faculty Workshop

A Faculty Development Committee within the ACE SIG has been formed and within this structure a new *Faculty Workshop* is being developed with Sandra Kaplan and Robin Dole as co-chairs. The purpose of this workshop is to assist new faculty transitioning from clinical practice in pediatrics into an academic role and is targeted to be offered in the Summer of 2018. Look for more information about this opportunity in the future.

Development of New Clinical Instructor Toolkit

The ACE SIG has been tasked to develop a Clinical Instructor Toolkit similar to the Faculty Toolkit.

Residency & Fellowship Subcommittee

The 22 accredited pediatric residencies and neonatal fellowships are now a subcommittee under the ACE SIG. If you are interested in developing a residency/fellowship program or you want to be part of this subcommittee as a residency director, please contact contact Dave Oleson olesond@ohsu.edu or Jim Moore jgmoore@miami.edu

Development of the Residency & Fellowship Consortium

A consortium of pediatric PT didactic modules is in development and supported by the Academy to promote pediatric residency and fellowship education. The mission of this newly formed consortium is to:

- Promote the development of Pediatric Physical Therapy Residency and Fellowship Programs by offering web-based education modules that meet the didactic requirements of the American Board of Physical Therapy Residency and Fellowship Education (ABPTRFE) for accreditation.
- Promote the development of Pediatric Physical Therapy Post-Professional Education throughout the United States by offering a didactic education series that assists in preparation for specialty certification in Pediatric Physical Therapy.
- Contact Sally LeCras PT, DPT, PCS with any questions about the Consortium @ Sally.LeCras@cchmc.org

ACE Listserv is available to promote discussion between members. All APPT Members are welcome to join the ACE Listserv by signing up on the Academy website under "Resources".

- **ACE Facebook Group** is available to pediatric physical therapists interested in discussing topics of common interest through the Facebook platform. You can request to join the ACE SIG Facebook Group by searching "APTA Academy of Pediatric Physical Therapy ACE SIG" in the main Facebook search bar.
- **APTA Online Community**
 - 1) Based on interest in having a dynamic and shared resource for specific teaching and learning ideas, ACE SIG members have started and contributed to a **Wiki Space**. On the wiki, you can browse and share ideas, resources, documents, articles related to teaching and learning in pediatric physical therapy. <https://sectiononpediatricface.sig.wikispaces.com/Get+Started>
 - 2) **Educational Research in Medicine** - AAMC Academic Medicine: Conducting Research in Health Professions Education: From Idea to Publication. An Invaluable resource to therapists engaging in educational research. These

are 1 – 3 page papers that visually and succinctly apply to didactic and clinical teaching. <http://journals.lww.com/academicmedicine/Documents/ACM.LastPage.e-book.FINAL.fromW-K.pdf>

Mary Jane Rapport, PT, DPT, PhD, FAPTA attended the MERC workshop at ELC as an ACE SIG member to report back to members about the purpose of these workshops, potential benefits for our members, and basic information.

The MERC (Medical Education Research) workshops that preceded the Education Leadership Conference (ELC) are part of a series of workshops designed and delivered by the Association of American Medical Colleges (AAMC) to build understanding and engagement in medical education research. The MERC workshops provide very specific, or content focused, training that could be beneficial for any ACE SIG members who are doing, or planning to do, educational research. For a complete description of the MERC certificate program and the curriculum, visit the website at <https://www.aamc.org/members/gea/merc/>

The cost of attending the first two workshops was \$275 registration, and the cost is

likely to be the same for the two workshops offered on a single day prior to CSM. One workshop will be in the morning, and the second in the afternoon.

Participants register for the day and are assigned to one room where they remain for both the morning and afternoon. The speakers switch rooms at the lunch break, and this allows for a small group to be present for the workshop in each room. The speaker delivers the content of their workshop twice in a day. The two final workshops will be offered prior to ELC in fall 2018.

A certificate can be earned by attending all 6 workshops and paying a \$100 fee, however workshops can also be attended separately without pursuing the certificate. The first two offered prior to ELC were “Program Evaluation” and “Measuring Educational Outcomes” (see website identified above for more details of each workshop). The MERC program was initially advertised before ELC as relevant for faculty with some experience in educational research, however the topics and content would be appropriate for all PT and PTA educators who have background in conducting educational research, are beginning to engage in this area of scholarship, or want to expand their working knowledge as consumers of educational research. The limited size of

participants in each workshop helps to encourage discussion and active learning under the direction of a knowledgeable instructor from the AAMC.

MERC workshops provide specific, or content focused, training that could be beneficial for any ACE SIG members who are doing, or planning to do, educational research.

Academic
& Clinical
Educators
(ACE) SIG
Newsletter
December
2017

UPCOMING EVENTS

- Combined Sections Meeting of the APTA –
February 21-24, 2018
<http://www.apta.org/CSM/Overview/>
 - The next ACE SIG Business Meeting
will be held at CSM 2018 – Date/time
TBD

ACADEMY OF —
PEDIATRIC
—PHYSICAL THERAPY